

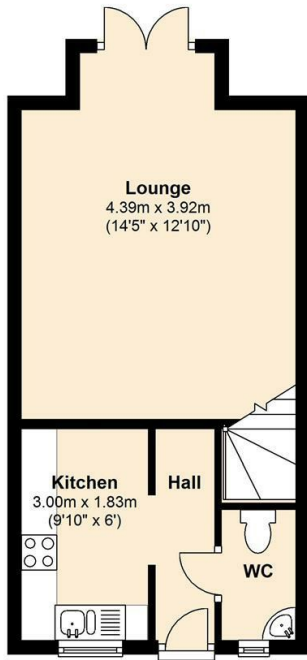
Prospect House, 3a St Thomas Place, Ely,
Cambs., CB7 4EX
01353 665020 | lettings@clarkhomes.co.uk
clarkhomes.co.uk



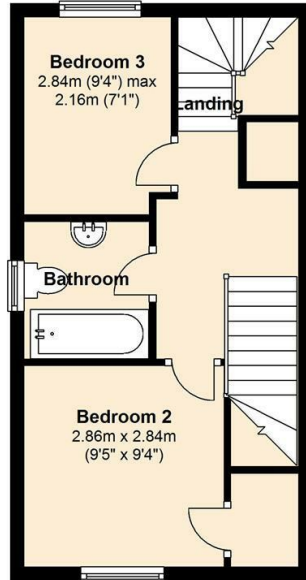
29 Fishers Bank, Littleport, CB6 1LL
£1,200 PCM



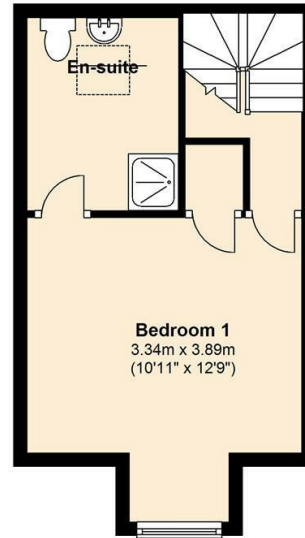
Ground Floor
Approx. 34.6 sq. metres (372.2 sq. feet)



First Floor
Approx. 32.0 sq. metres (344.6 sq. feet)



Second Floor
Approx. 23.7 sq. metres (255.4 sq. feet)



Total area: approx. 90.3 sq. metres (972.2 sq. feet)

This floorplan is produced purely as a guide to the property and it is not to scale therefore its strict accuracy is not guaranteed. It should not be used to order goods or services by a prospective purchaser who should visit the property and satisfy themselves with regard to measurements and layout.

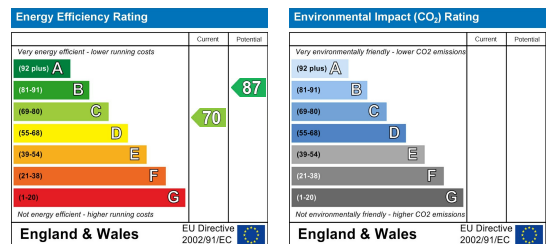
Plan produced using PlanUp.



A modern 3 bedroom terraced Town House located in Littleport within a popular cul de sac near the edge of the village. The accommodation comprises: Entrance Hall with laminate flooring. Cloakroom/WC with a tiled floor. Fitted Kitchen with built in cooking appliances. Living Room with laminate flooring and French doors to the rear garden. First Floor Landing. Two first floor Bedrooms. Bathroom. Second Floor Landing. Master Bedroom with En Suite Shower Room. Heating is gas fired and windows PVCu double glazed. Outside is a pleasant rear garden with paved patio and lawn. Access to the single garage. The house is freshly decorated. . EPC Rating C. Council Tax Band C.

Directions to the property using What3Words.
Enter the link in your browser then click on Waze or Google Maps:

P1081



These particulars, whilst believed to be accurate are set out as a general outline only for guidance and do not constitute any part of an offer or contract. Intending purchasers should not rely on them as statements of representation of fact, but must satisfy themselves by inspection or otherwise as to their accuracy. No person in this firm's employment has the authority to make or give any representation or warranty in respect of the property.